

SRTD3 Antibody (N-term)
Affinity Purified Rabbit Polyclonal Antibody (Pab)
Catalog # AP5927a**Specification**

SRTD3 Antibody (N-term) - Product Information

Application	WB,E
Primary Accession	O9UJW9
Other Accession	O9ERC3 , NP_976219.1 , NP_037500.2
Reactivity	Human, Mouse
Host	Rabbit
Clonality	Polyclonal
Isotype	Rabbit IgG
Calculated MW	21769
Antigen Region	24-53

SRTD3 Antibody (N-term) - Additional Information**Gene ID** 29946**Other Names**

SERTA domain-containing protein 3, Replication protein-binding trans-activator, RPA-binding trans-activator, SERTAD3, RBT1

Target/Specificity

This SRTD3 antibody is generated from rabbits immunized with a KLH conjugated synthetic peptide between 24-53 amino acids from the N-terminal region of human SRTD3.

Dilution

WB~~1:1000

E~~Use at an assay dependent concentration.

Format

Purified polyclonal antibody supplied in PBS with 0.09% (W/V) sodium azide. This antibody is purified through a protein A column, followed by peptide affinity purification.

Storage

Maintain refrigerated at 2-8°C for up to 2 weeks. For long term storage store at -20°C in small aliquots to prevent freeze-thaw cycles.

Precautions

SRTD3 Antibody (N-term) is for research use only and not for use in diagnostic or therapeutic procedures.

SRTD3 Antibody (N-term) - Protein Information**Name** SERTAD3

Synonyms RBT1

Function Antiviral interferon-stimulated protein that plays a role in innate immunity and in the suppression of viruses through different mechanisms (PubMed:[33147462](#), PubMed:[36594413](#)). Plays a role in the late phase response of TLR-induced immune effector expression (By similarity). During influenza infection, interacts with PB2, PB1, and PA to disrupt the formation of the viral RdRp complex (PubMed:[33147462](#)). Inhibits zika virus by interacting with the capsid protein in the nucleolus and reducing its abundance through proteasomal degradation (PubMed:[36594413](#)). Strong transcriptional coactivator (PubMed:[10982866](#)).

Cellular Location

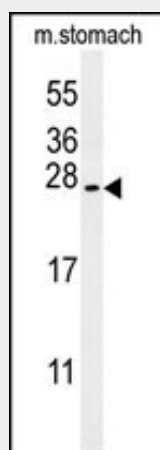
Nucleus.

SRTD3 Antibody (N-term) - Protocols

Provided below are standard protocols that you may find useful for product applications.

- [Western Blot](#)
- [Blocking Peptides](#)
- [Dot Blot](#)
- [Immunohistochemistry](#)
- [Immunofluorescence](#)
- [Immunoprecipitation](#)
- [Flow Cytometry](#)
- [Cell Culture](#)

SRTD3 Antibody (N-term) - Images



SRTD3 Antibody (N-term) (Cat. #AP5927a) western blot analysis in mouse stomach tissue lysates (35ug/lane). This demonstrates the SRTD3 antibody detected the SRTD3 protein (arrow).